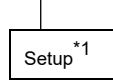


Model Code / Additional Spec. Code (No entry if additional spec. code is not specified.)

VM-771B /SU0



*1 A PC is required. Setup option includes initial setup of the PC, installation of the software and PC address setting.

Specification

SYSTEM REQUIREMENTS

HARDWARE REQUIREMENTS

PC/AT compatible personal computer	
Processor	Intel Pentium® compatible (1GHz or higher) processor clock speed recommended
Memory	1GB or higher recommended
Display	1024 X 768 or higher-resolution
Hard disk drive	15GB of available hard-disk space
Drive	DVD-ROM drive
Network	Ethernet 100 BASE-TX

SOFTWARE REQUIREMENTS

Category	Model	Edition	Version
OS	Microsoft® Windows® XP (32bit)*2	Professional	SP3
	Microsoft® Windows® 7 (32/64bit)	Professional or higher	Any
	Microsoft® Windows® 8.1(32/64bit)	Pro or higher	Any
	Microsoft® Windows® 10 (32/64bit)	Pro or higher	Any
Others	Microsoft® Windows® 11 (64bit)	Pro or higher	Any
	Microsoft® Windows® installer	—	3.1 or later
	Microsoft® .NET Framework	—	3.5

CONNECTION

Supported devices : VM-7B Monitor, VM-7 Monitor*2
Total input : 4 devices (Max.)*3

*2 Modules with firmware versions V0.9.0 or later are required.
*3 Multiple concurrent communication requires a hub.

COMMUNICATION

Network : Ethernet 100Base-TX
Protocol : TCP/IP

RECORDING

SHORT TERM DATA

Data : Measured values of each modules
Acquisition interval : 1 sec.
Period : 1 week

LONG TERM DATA

Data : Maximum values and mean values of measured values
Acquisition interval : 1 hour
Period : 3 years

SCREEN

Bar graph screen : Measured values are displayed in rectangular bars.
Relay status screen : Relay status and logic is displayed.
Trend graph screen : Short term data or long term data is displayed.
Range of short term data display : 1 hour / 30 minutes / 15 minutes / 10 minutes / 5 minutes / 2 minutes
Range of long term data display : 3 months / 1 month / 2 weeks / 1 week / 3 days / 1 day
Train screen : Displays measured values and the train diagram.
Detailed information window : Monitor range and alarm set values are displayed.

DISPLAY DATA

MEASURED VALUES

GAP (bias) voltage indications, Digital indication of measured values

ALARM

DANGER alarm, ALERT alarm, OK alarm (NOT-OK), GAP alarm*4, System OK alarm (SYSTEM-OK), Power OK alarm (POWER-OK)

*4 Outputs as ALERT alarm.

STATUS

DANGER bypass status, Channel bypass status, Demo-mode (simulated value setting mode) status, Sequence mode status, 10-pole high-pass filter (10-pole low-cut filter) status, Peak hold status, First-out status*5, Internal bus communication abnormality status*6, Communication board install status*7

*5 Only the ALERT LED of the module first set off DANGER/ALERT alarm flashing.

*6 Only the ALERT LED on the left-end of the screen flashing.

*7 Only available of VM-7B Monitor.

SET VALUES

Channel name, Tag name, Serial number, Firmware ID*8, Monitor range, DANGER alarm set values, ALERT alarm set values

*8 Only available of VM-7B Monitor.

CONTROL FUNCTIONS

RESET INSTRUCTION

Alarm reset, Peak hold reset, First-out reset

BYPASS INSTRUCTION

DANGER bypass, Channel bypass

Specification

OTHER FUNCTIONS

- Password protection : Password authentication is executed to the instruction of the control operation.
- Screen capture : Captures active screen in PNG form.
- CSV output : The data of the trend graph under the display is output by Comma Separated Value.

SOFTWARE DISTRIBUTION MEDIA

Media : DVD-ROM

WARNING
Some functions may not be available with old version.
For details, please refer to "infiSYS Family Improvement Information" (6H16-011).

- ※ The specifications and other items indicated herein are subject to change without notice.
- ※ All company and product names in this brochure are trademarks or registered trademarks.

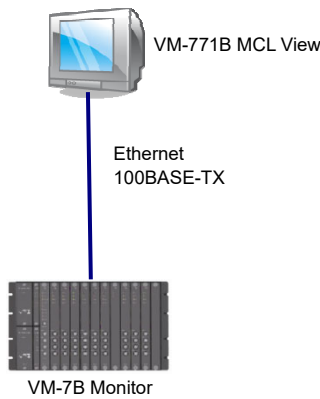
Default Value

Communication

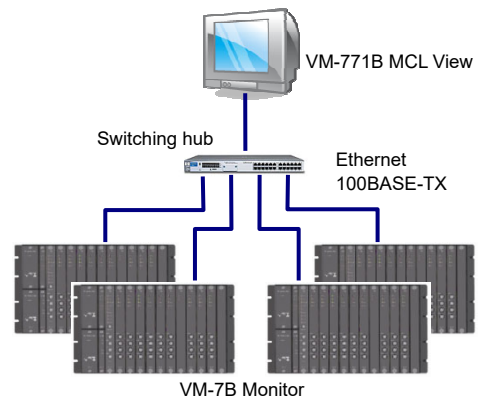
- IP Address (Rack1) : 192.168.8.8
- IP Address (Rack2) : 192.168.8.9
- IP Address (Rack3) : 192.168.8.10
- IP Address (Rack4) : 192.168.8.11
- Port Number (All) : 8888

OTHERS

System Configuration



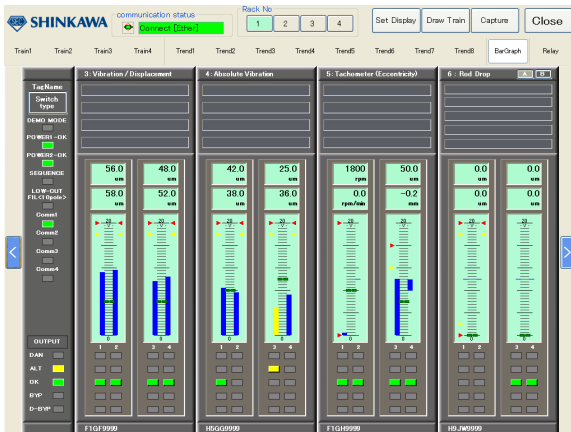
Connecting to one VM-7B Monitor



Connecting to four VM-7B Monitor

Example of Screen

BAR GRAPH SCREEN



TREND GRAPH SCREEN



※Actual screens may differ from the images shown in this document.